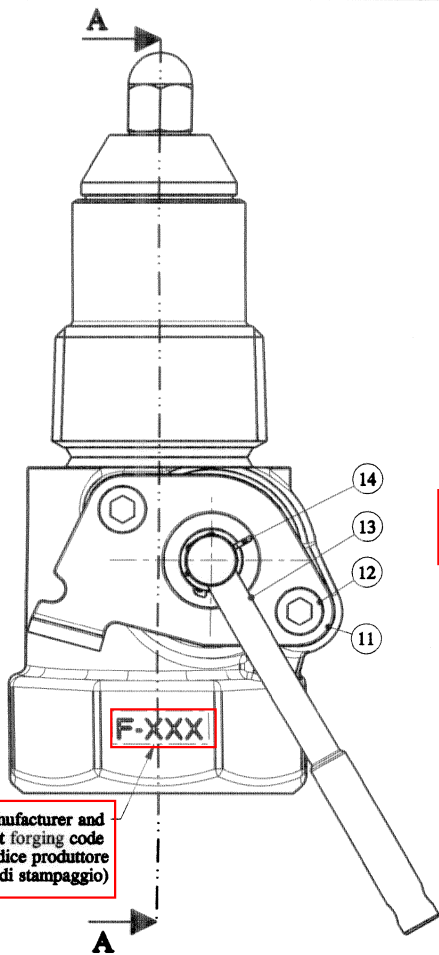
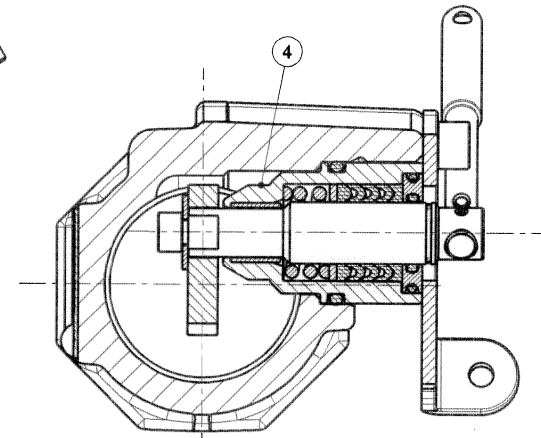
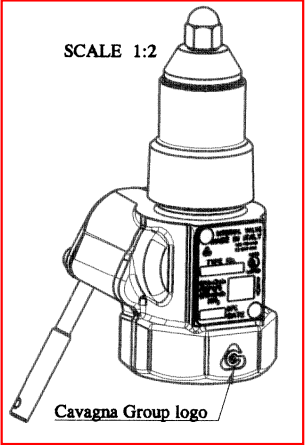
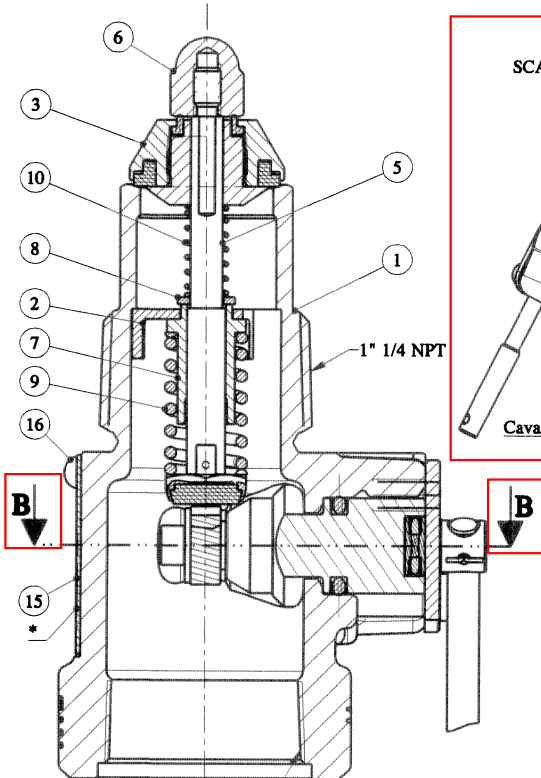


This drawing cannot be reproduced nor given to a third party without a written authorization by CAVAGNA GROUP DIV. OMECA S.p.a. (ITALY)



Manufacturer and hot forging code (Codice produttore e di stampaggio)



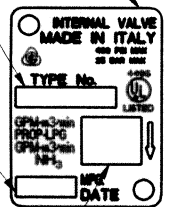
SECTION B-B

16	Hammer Drive Screw	2	1401100013
15	Sign Plate	1	2001101235
14	Split Pin	1	3001100340
13	Lever Arm	1	1301100134
12	Socket screw	2	1401101047
11	Bracket for Lever	1	1301100133
10	Spring for Bleeder function	1	0701100441
9	Main Spring	1	0701100417
8	Washer	1	1501101014
7	Guiding Bush	1	1501101018
6	Nut	1	3001100338
5	Main Spindle assembled	1	1309500070
4	Lever Section assembled	1	1309500071
3	Cone assembled	1	1509500106
2	Guide f. Main Spindle	1	1501101181
1	Body machined	1	0101501982
POS DENOMINATION		Q.	DRAW NR.

\* Markings according to sign plate 2001101235 plus:

0103 (Type number codice prodotto)

Y (year), two last figures of year of construction and number of week (EX. Y12-10 = the tenth week of the year 2012 decima settimana dell'anno 2012)



80-0.3 (GPM PROP-m<sup>3</sup>/min LPG)  
72-0.27 (GPM NH<sub>3</sub>-m<sup>3</sup>/min NH<sub>3</sub>)

DESCRIPTION		INTERNAL VALVE 1" 1/4 NPT (80GPM)					
		GEN. TOLL. ±-	GEN. FILL. R -	ANG. TOLL. ±-	DRAFT -	SCALE 1:1	SHEET 1 / 1
		RESPONS.	DRAWN		ISSUE		MATERIAL
DATE		25-10-04		10-12-04			
SIGNATURE		Vendola		Treccani			
ACTIVITY	NUMBER	08005	PROJECT	03426		DRAW NUMBER	
	SIGN.	Treccani	REFERENCE	-		6902900103	
	INDEX	A3	XXXXX	XXXXXX			