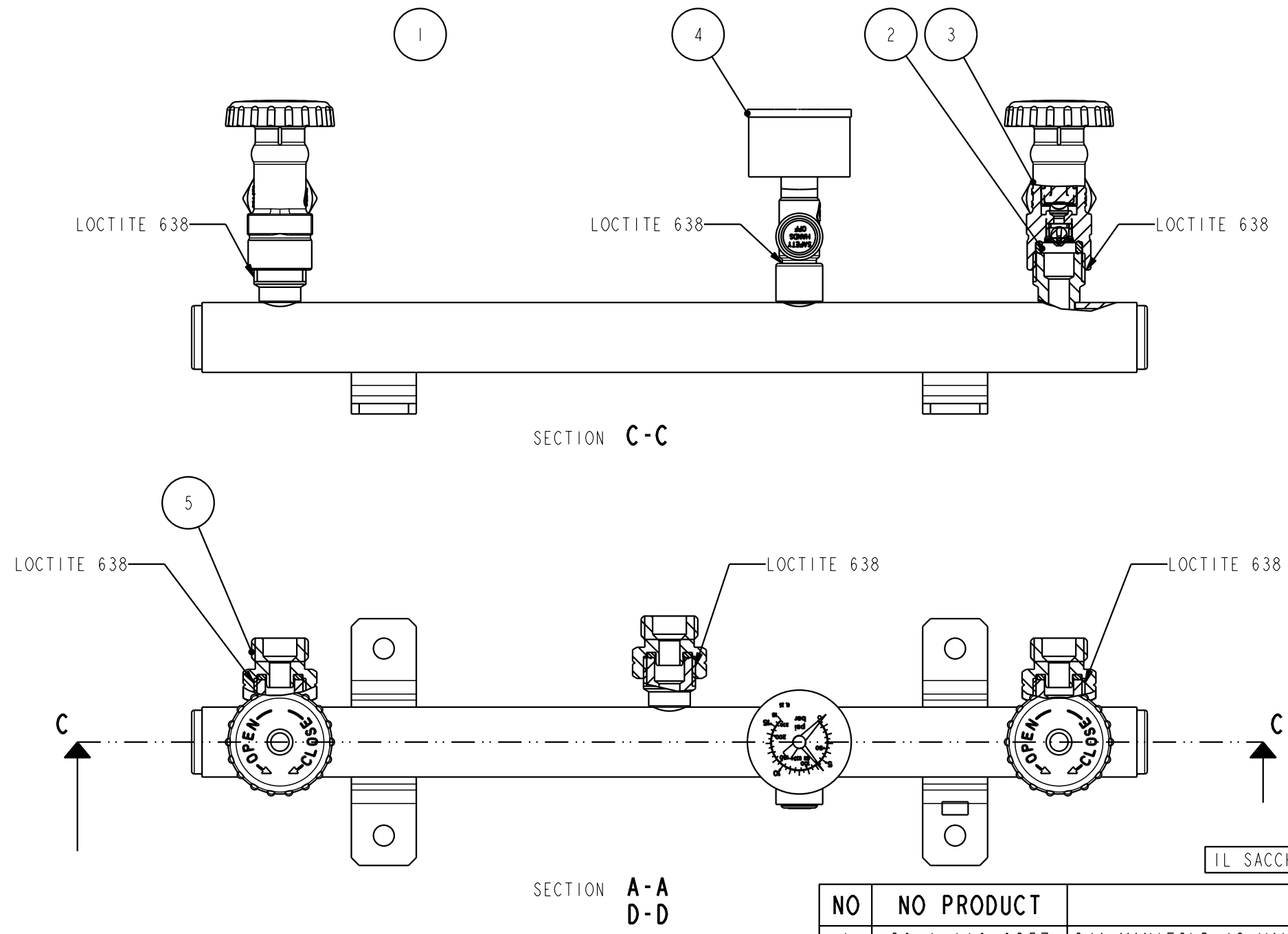



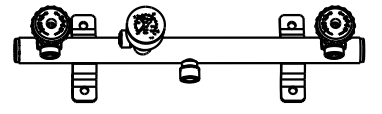
This drawing may not be copied or distributed in any way without the written permission of Cavagna Group Div. RE.CA. Via Matteotti, 5 - Calvisano - BS - Italy



LABEL FOR EXPEDITION BOX



NS Code: 55-1-190-0023
VS Code: -
Description: MANIFOLD 2 VALVES WITH SAFETY VALVE AND GAUGE
INLET: W21.8x1/14" L.H.
OUTLET: W21.8x1/14" L.H.



Pcs per carton:
Date: //


IL SACCHETTO D'IMBALLAGGIO NON DEVE ESSERE CHIUSO

PAY ATTENTION TO THE VALVES/MANOMETER ORIENTATION

NO	NO PRODUCT	DENOMINATION	Q. TY
1	30-1-110-0357	S/A MANIFOLD (2 VALVE)	1
2	04-1-110-0136	GASKET (OMEGA CODE 0461100012)	2
3	80-6-190-0012	VALVE FOR ITALIAN MARKET	2
4	16-1-950-0333	S/A SAFETY VALVE FOR MANIFOLD	1
5	16-1-950-0379	S/A ADAPTER W20x1/14" FEMALE - W21.8x1/14" L.H. MALE	3
6	23-1-210-0621	PLASTIC BAG FOR MANIFOLD (210x500)	1
7	23-1-510-0020	BOX 1100x800x815	1
8	34-1-210-2702	LABEL FOR EXPEDITION BOX (100X100)	1

PERFORMANCE RICHIESTE

TENUTA APPARECCHIO	PERFETTAMENTE A TENUTA A 16 bar: PERDITA < 15 cc/h
PERDITA DI CARICO	< 20 mbar CON PRESSIONE DI 0.3 bar E PORTATA 2 kg/h SU OGNI SINGOLA VALVOLA
APERTURA VDS	17.65 bar ± 5%
ANTIRITORNO VALVOLA	PERDITA < 200 cc/h CON PRESSIONE DA 0.3 bar A 16 bar

DENOMINATION		MANIFOLD (2 VALVE) WITH ACCESSORIES		0.3-16 bar			
	MODEL	ORIFICE	INLET	OUTLET	SHARED	PROD. INT. GROUP	
RECA	N.A.	-	ø21.8x1.814 L.H.	W 21.8X1/14" MALE L.H.	N.A.	-	
PERFORMANCE DOC.	COUNTRY	COUNTRY SPECIFIC	WEIGHT	SCALE	MODIFY FILE	PRODUCT NO	REV
N.A.	N.A.	N.A.	N.A.	1:2	N.A.	55-1-190-0023	0
PROD. EVOLUTION	PROJECT NO	RELEASE LEVEL	DRAWN BY	VERIFIED BY	APPROVED BY	DATE	
DEFINITIVE	DS05268	APPROVED	PEDRINI M.	TOMASELLI L.	SCHLICK B.	15/04/15	